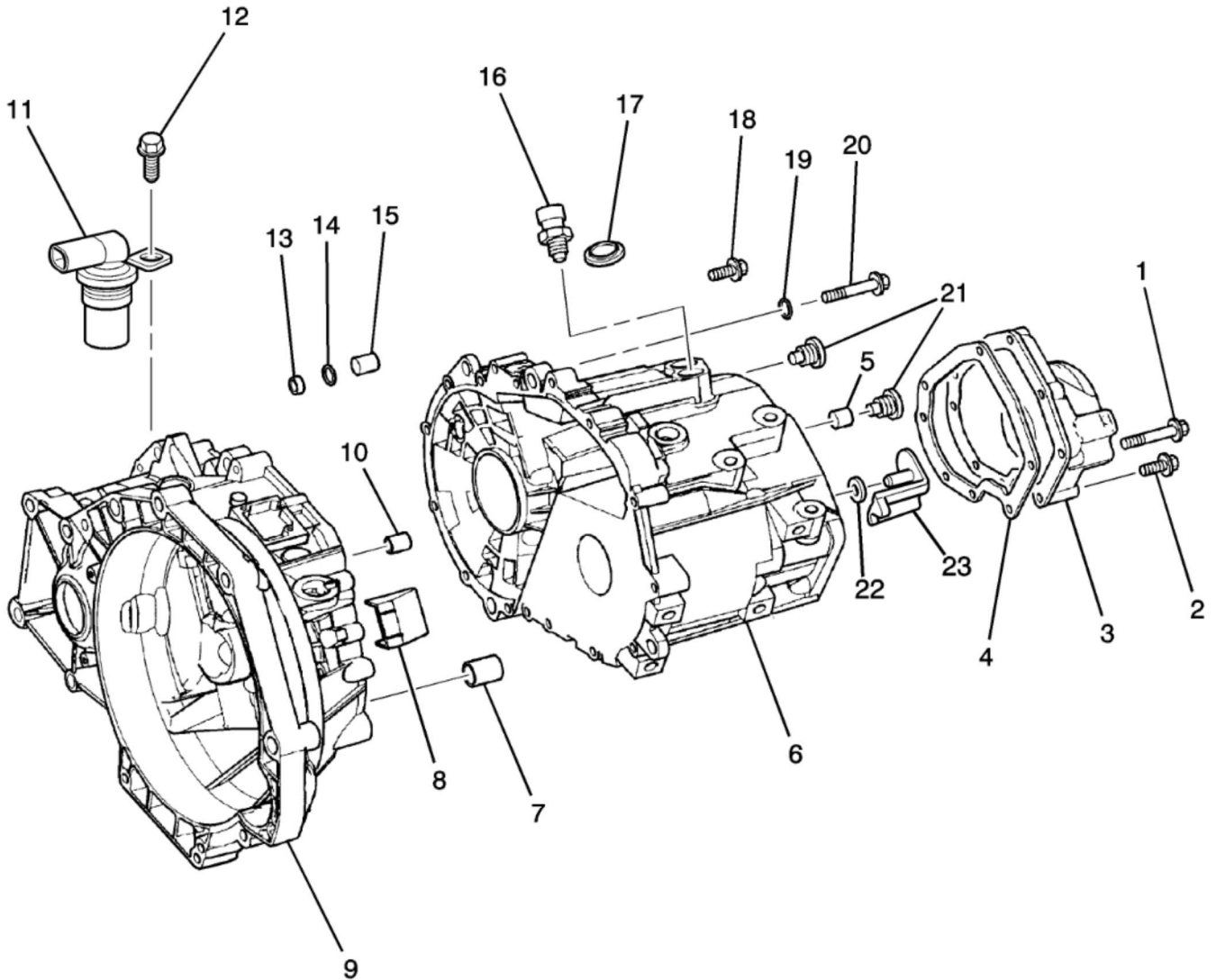


C - Chevrolet>2009>A - 1A1 - Cobalt>04 - 5-SPEED MANUAL TRANSMISSION>(MA04-042) 2005-2010 AP 5-SPEED MANUAL TRANSAXLE (MU3) PART 5 CASE, COVER AND COMPONENTS

MA04-042 03/10/2008



C - Chevrolet>2009>A - 1A1 - Cobalt>04 - 5-SPEED MANUAL TRANSMISSION>(MA04-042) 2005-2010 AP 5-SPEED MANUAL TRANSAXLE (MU3) PART 5 CASE, COVER AND COMPONENTS

Call	Group	H	Description	Usage	Year	Qty
1	04.010		BOLT, SHFT CONT LVR BRKT (Service Lane Part)	A (MU3)	2006 - 2010	02
2	04.104		BOLT, TRANS CASE (Service Lane Part)	A (MU3)	2005 - 2010	03
3	04.105		COVER, TRANS (INCLS 22,23) (Service Lane Part)	A (MU3)	2005 - 2010	01
4	DISCON		GASKET, TRANS CVR	A (MU3)	2005 - 2010	01
5	04.105		MAGNET, TRANS (10 X 10 MM) (*KIT1) (Service Lane Part)	A (MU3)	2005 - 2010	01
6	04.103		CASE, TRANS (INCLS 14,17,19)	A (MU3)	2005 - 2010	01
7	04.319		BUSHING, TRANS EXTN (4.384) (Service Lane Part)	A (MU3)	2005 - 2010	04
8	00.679		COVER, CLU HSG (4.105) (Service Lane Part)	A (MU3)	2005 - 2010	01
9	00.683		HOUSING, CLU (Service Lane Part)	A (LNF,MU3,F19)	2008 - 2010	01
10	04.104		FILTER, TRANS VENT (Service Lane Part)	A (MU3)	2005 - 2010	01
11	04.329		SENSOR, VEH SPD (USE T/W MATING CONN 88987993) (ACDelco #213-3674) (Service Lane Part)	A (LNF,MU3,F19) (EXC G85)	2008 - 2010	01
11	03.682		SENSOR, VEH SPD (USE T/W MATING CONN 88987993) (4.329) (ACDelco #213-3674) (Service Lane Part)	A (LNF,MU3,F19) (EXC G85)	2008 - 2010	01
11	04.710		SENSOR, VEH SPD (USE T/W MATING CONN 88987993) (4.329) (ACDelco #213-3674) (Service Lane Part)	A (LNF,MU3,F19) (EXC G85)	2008 - 2010	01
11	04.710		SENSOR, VEH SPD (USE T/W MATING CONN 88987993) (4.329) (ACDelco #213-3674) (Service Lane Part)	A (LNF,MU3,F19,G85)	2008 - 2010	01
11	03.682		SENSOR, VEH SPD (USE T/W MATING CONN 88987993) (4.329) (ACDelco #213-3674) (Service Lane Part)	A (LNF,MU3,F19,G85)	2008 - 2010	01
11	04.329		SENSOR, VEH SPD (USE T/W MATING CONN 88987993) (ACDelco #213-3674) (Service Lane Part)	A (LNF,MU3,F19,G85)	2008 - 2010	01

Call	Group	H	Description	Usage	Year	Qty
12	03.682		BOLT, VEH SPD SEN (4.302) (Service Lane Part)	A (LNF,MU3)	2008 - 2010	01
12	04.329		BOLT, VEH SPD SEN (4.302) (Service Lane Part)	A (LNF,MU3)	2008 - 2010	01
13	00.683		NUT, CLU HSG (M8 X 1,25) (11.610)	A (MU3)	2005 - 2010	01
14	NS		WASHER, CLU HSG (PART OF 6)		2005 - 2010	
15	04.104		PIN, CLU HSG LOC (0.685) (Service Lane Part)	A (MU3)	2005 - 2010	02
15	00.685		PIN, CLU HSG LOC (Service Lane Part)	A (MU3)	2005 - 2010	02
16	02.698		SWITCH, B/U LP (ACDelco #D1587H) (Service Lane Part)	A (MU3)	2005 - 2010	01
17	04.302		BEARING, SHFT CONT LVR (PART OF 6) (4.510) (Service Lane Part)	A (MU3)	2005 - 2010	02
18	04.104		BOLT, TRANS CASE (Service Lane Part)	A (MU3)	2005 - 2010	03
19	NS		WASHER, CLU HSG (PART OF 6)		2005 - 2010	
20	04.010		BOLT, SHFT CONT LVR BRKT (Service Lane Part)	A (MU3)	2006 - 2010	02
21	04.104		PLUG, TRANS VENT HOLE (M18X1.5, 21 LENGTH) (*KIT1) (Service Lane Part)	A (MU3)	2005 - 2010	02
22	DISCON		WASHER, TRANS CVR (PART OF 3)	A (MU3)	2005 - 2010	01
23	04.105		TROUGH, M/TRNS OIL (PART OF 3) (4.195) (Service Lane Part)	A (MU3)	2005 - 2010	01
K01	04.104		PLUG, TRANS VENT HOLE (INCLS 5,21) (M18X1.5, 21 LENGTH) (PLUG & MAGNET) (Service Lane Part)	A (LNF,MU3,F19)	2008 - 2010	01