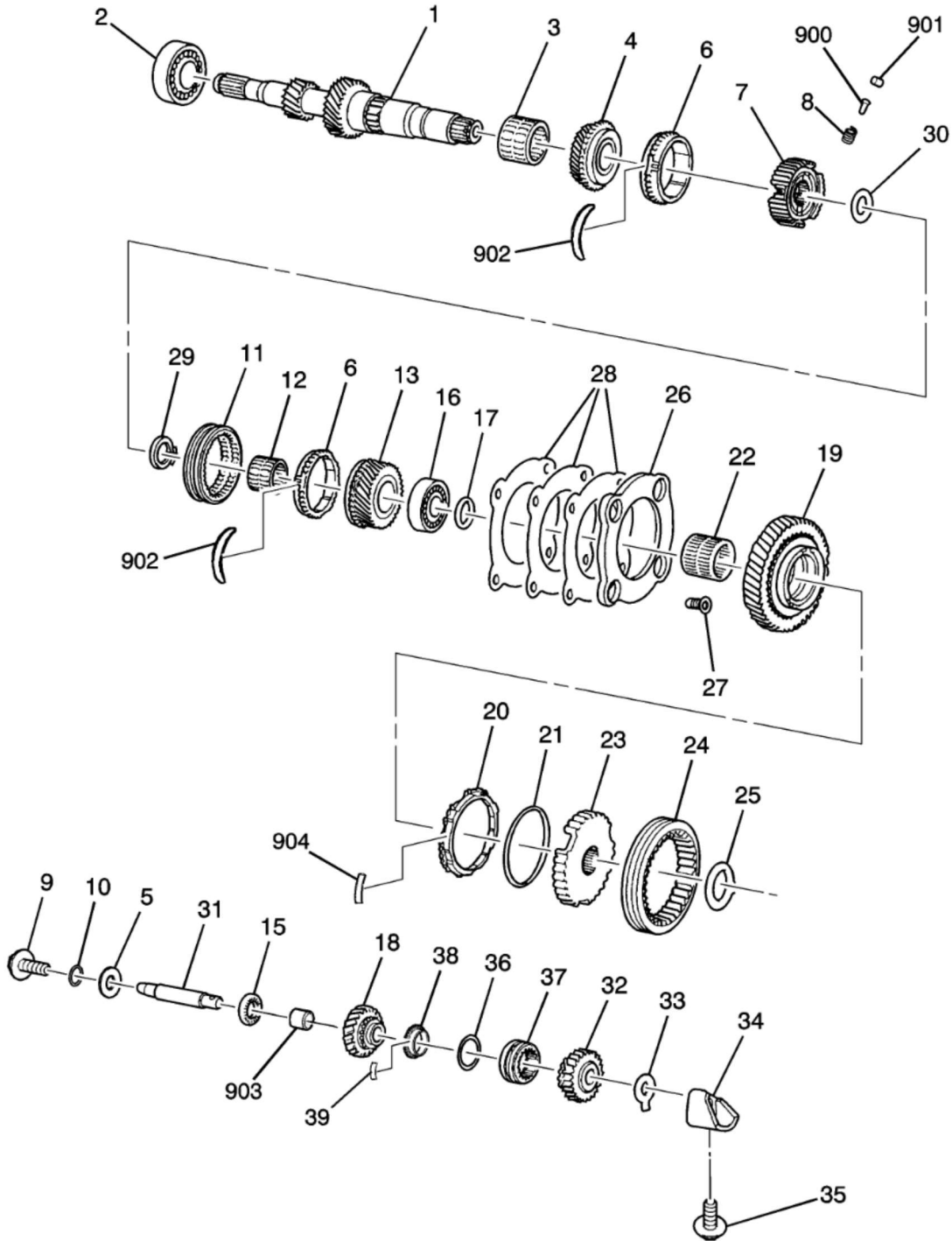


C - Chevrolet>2009>A - 1A1 - Cobalt>04 - 5-SPEED MANUAL TRANSMISSION>(MA04-040) 2005-2010 AP 5-SPEED MANUAL TRANSAXLE (MU3) PART 3 INPUT SHAFT AND COMPONENTS

MA04-040 08/29/2008



## C - Chevrolet&gt;2009&gt;A - 1A1 - Cobalt&gt;04 - 5-SPEED MANUAL TRANSMISSION&gt;(MA04-040) 2005-2010 AP 5-SPEED MANUAL TRANSAXLE (MU3) PART 3 INPUT SHAFT AND COMPONENTS

| Call | Group  | H | Description  | Usage   | Year        | Qty |
|------|--------|---|--|---------|-------------|-----|
| 1    | 04.351 |   | SHAFT, INPUT (4.403) (Service Lane Part)   | A (MU3) | 2005 - 2010 | 01  |
| 2    | 04.352 |   | BEARING, INPUT SHF (FRONT) (Service Lane Part)   | A (MU3) | 2005 - 2010 | 01  |
| 3    | 04.355 |   | BEARING, 3RD GR (Service Lane Part)  | A (MU3) | 2005 - 2010 | 01  |
| 4    | 04.415 |   | GEAR KIT, 3RD (DRIVE) (Service Lane Part)  | A (MU3) | 2005 - 2010 | 01  |
| 5    | 04.437 |   | WASHER, REV IDLER GR SHF (Service Lane Part)   | A (MU3) | 2005 - 2010 | 01  |
| 6    | 04.383 |   | RING, 3RD GR BLOCKING (4.380) (Service Lane Part)  | A (MU3) | 2005 - 2010 | 02  |
| 7    | 04.384 |   | HUB, 3RD & 4TH GR SYN (Service Lane Part)  | A (MU3) | 2005 - 2010 | 01  |
| 8    | 04.384 |   | SPRING, 3RD & 4TH GR SYN INS (Service Lane Part)   | A (MU3) | 2005 - 2010 | 03  |
| 9    | 04.435 |   | BOLT, REV IDLER GR SHF (4.105) (Service Lane Part)   | A (MU3) | 2005 - 2010 | 01  |
| 10   | 04.412 |   | RETAINER, MAIN SHF RR BRG (4.435) (Service Lane Part)  | A (MU3) | 2005 - 2010 | 01  |
| 11   | 04.384 |   | SLEEVE, 3RD & 4TH GR SYN (Service Lane Part)   | A (MU3) | 2005 - 2010 | 01  |
| 12   | 04.355 |   | BEARING, 4TH GR (Service Lane Part)  | A (MU3) | 2005 - 2010 | 01  |
| 13   | 04.415 |   | GEAR KIT, 4TH (Service Lane Part)  | A (MU3) | 2005 - 2010 | 01  |
| 15   | 04.431 |   | BEARING, REV IDLER GR THR (Service Lane Part)  | A (MU3) | 2005 - 2010 | 01  |
| 16   | 04.352 |   | BEARING, INPUT SHF (REAR) (Service Lane Part)  | A (MU3) | 2005 - 2009 | 01  |
| 17   | 04.353 |   | RING, INPUT SHF RET (4.412) (Service Lane Part)  | A (MU3) | 2005 - 2010 | 01  |
| 18   | 04.430 |   | GEAR, REV IDLER (GEAR ONLY) (Service Lane Part)  | A (MU3) | 2005 - 2010 | 01  |
| 19   | NS     |   | GEAR KIT, 5TH (SEE GROUP 04 "5-SPEED MANUAL TRANSAXLE/COMPLETE" FOR DETAILED ILLUSTRATED VIEW) |         | 2005 - 2010 |     |
| 20   | 04.383 |   | RING, 5TH GR BLOCKING (4.380) (Service Lane Part)  | A (MU3) | 2005 - 2010 | 01  |

| Call | Group  | H | Description   | Usage   | Year        | Qty |
|------|--------|---|---|---------|-------------|-----|
| 21   | 04.384 |   | SPRING, 5TH GR SYN (Service Lane Part)  | A (MU3) | 2005 - 2010 | 01  |
| 22   | 04.355 |   | BEARING, 5TH GR (Service Lane Part)   | A (MU3) | 2005 - 2010 | 01  |
| 23   | 04.384 |   | HUB, 5TH GR SYN (MUST USE T/W 55566795 SLEEVE) (Service Lane Part)            | A (MU3) | 2007 - 2010 | 01  |
| 24   | DISCON |   | SLEEVE, 5TH GR SYN  | A (MU3) | 2007 - 2010 | 01  |
| 25   | 04.384 |   | RING, 5TH GR SYN RET (Service Lane Part)                                      | A (MU3) | 2005 - 2010 | 01  |
| 26   | 04.353 |   | RETAINER, INPUT SHF BRG (Service Lane Part)                                   | A (MU3) | 2005 - 2009 | 01  |
| 27   | 04.422 |   | BOLT, INPUT SHF BRG RET (Service Lane Part)                                   | A (MU3) | 2005 - 2010 | 04  |
| 28   | 04.356 |   | SHIM, INPUT SHF BRG RET (0.10MM THICK) (4.376) (Service Lane Part)            | A (MU3) | 2005 - 2010 | AR  |
| 28   | 04.356 |   | SHIM, INPUT SHF BRG RET (0.15MM THICK) (4.376) (Service Lane Part)            | A (MU3) | 2005 - 2009 | AR  |
| 28   | DISCON |   | SHIM, INPUT SHF BRG RET (0.30MM THICK)  | A (MU3) | 2005 - 2009 | AR  |
| 28   | 04.356 |   | SHIM, INPUT SHF BRG RET (0.50MM THICK) (4.376) (Service Lane Part)            | A (MU3) | 2005 - 2009 | AR  |
| 28   | 04.356 |   | SHIM, INPUT SHF BRG RET (1.0MM THICK) (4.376) (Service Lane Part)             | A (MU3) | 2005 - 2009 | AR  |
| 29   | 04.384 |   | RING, 3RD & 4TH GR SYN RET (Service Lane Part)                                | A (MU3) | 2005 - 2010 | 01  |
| 30   | 04.415 |   | WASHER, 3RD & 4TH GR THR (4.348) (Service Lane Part)                          | A (MU3) | 2005 - 2010 | 01  |
| 31   | 04.433 |   | SHAFT, REV IDLER GR (Service Lane Part)                                       | A (MU3) | 2005 - 2010 | 01  |
| 32   | 04.430 |   | GEAR, REV IDLER (INCLS BUSHING) (Service Lane Part)                           | A (MU3) | 2005 - 2010 | 01  |
| 33   | 04.437 |   | WASHER, REV IDLER GR THR (4.419) (Service Lane Part)                          | A (MU3) | 2005 - 2010 | 01  |
| 34   | 04.435 |   | BRACKET, REV IDLER GR SHF (Service Lane Part)                                 | A (MU3) | 2005 - 2010 | 01  |
| 35   | 04.435 |   | BOLT, REV IDLER GR SHF BRKT (4.010) (Service Lane Part)                       | A (MU3) | 2005 - 2010 | 01  |
| 36   | 04.413 |   | SPRING, REV GR SYN (BLOCKING) (MUST BE USED T/W 90490971) (Service Lane Part) | A (MU3) | 2005 - 2010 | 01  |
| 37   | 04.384 |   | SLEEVE, 1ST & REV GR SYN (Service Lane Part)                                  | A (MU3) | 2005 - 2010 | 01  |

| Call | Group  | H | Description  | Usage   | Year        | Qty |
|------|--------|---|--|---------|-------------|-----|
| 38   | 04.383 |   | RING, REV GR BLOCKING (MUST BE USED T/W 90511116) (4.380)<br>(Service Lane Part) | A (MU3) | 2005 - 2010 | 01  |
| 39   | 04.413 |   | SPRING, REV GR SYN (IDLER) (4.384) (Service Lane Part)                           | A (MU3) | 2005 - 2010 | 03  |
| 900  | 04.384 |   | PIN, 3RD & 4TH GR SYN INS (4.311) (Service Lane Part)                            | A (MU3) | 2005 - 2010 | 03  |
| 901  | 04.384 |   | INSERT, 3RD & 4TH GR SYN (4.352) (Service Lane Part)                             | A (MU3) | 2005 - 2010 | 03  |
| 902  | 04.384 |   | SPRING, 3RD & 4TH GR SYN DTNT (Service Lane Part)                                | A (MU3) | 2005 - 2010 | 06  |
| 903  | 04.430 |   | BUSHING, REV IDLER GR (4.419) (Service Lane Part)                                | A (MU3) | 2005 - 2010 | 02  |
| 904  | 04.384 |   | SPRING, 5TH GR SYN DTNT (Service Lane Part)                                      | A (MU3) | 2005 - 2010 | 03  |